



Let **UK** Home

2 Bedrooms

Flat

Located in Wembley

£2,700 Per Month



info@letukhome.co.uk

<https://www.letukhome.co.uk/>

01795 358 886



33 Olympic Way Wembley

HA9 0GE



Let UK Home are excited to present this immaculate two bedroom apartment in Marathon House, part of Wembley Park Gate development located at the door of Wembley Stadium.

The flat comprises a spacious open kitchen with a stylishly attached dining area, a magnificent living room leading to a large private balcony, two bright double bedroom(master with wardrobe and en-suite) and one modern family bathroom.

The development features concierge service, bike storage and beautiful communal courtyards.

Not far from the development is Wembley Park, a park with large green spaces and beautiful scenery. It is a good place for exercise and rest. Wembley Park Underground station (Jubilee & Met Line) is within walking distance away and links directly to central London with Baker street, Oxford Circus and Canary Wharf. London Designer Outlet is also on the doorstep offering a Cinema complex and numerous shops & restaurants.

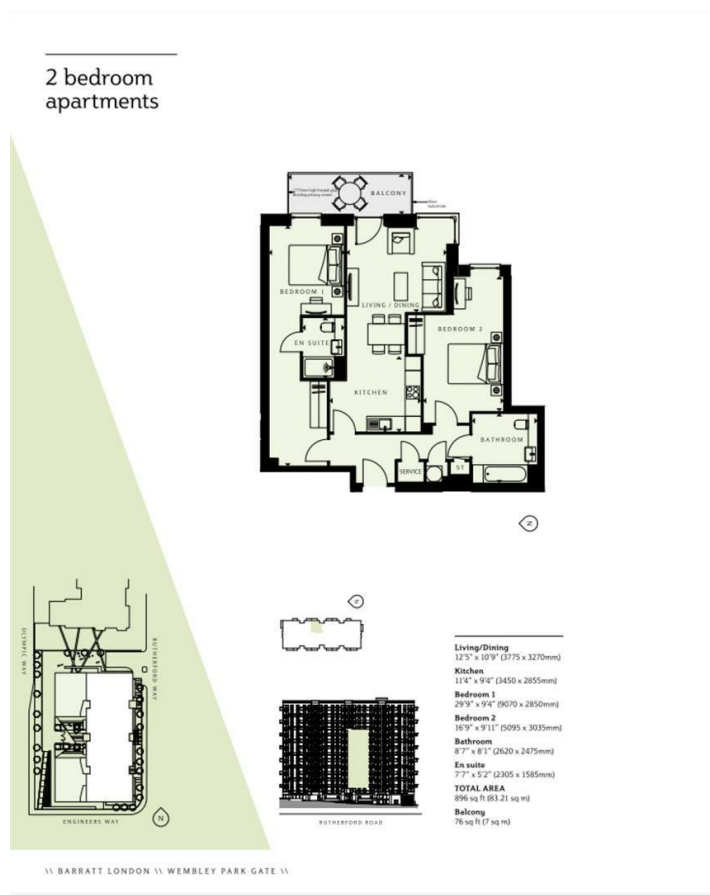
Note: Short-term rentals accepted.

33 Olympic Way Wembley

£2,700 Per Month

- 6th Floor
- Communal Courtyard
- Short-term Rentals Accepted
- Concierge Service
- Bike Storage





Let **UK** Home

3F 2 Eastbourne Terrace
Paddington
London
W2 6LG

01795 358 886

info@letukhome.co.uk

Council Tax Band: D

Local Authority:

Agents Note: Whilst every care has been taken to prepare these particulars, they are for guidance purposes only. All measurements are approximate and are for general guidance purposes only and whilst every care has been taken to ensure their accuracy, they should not be relied upon and potential buyers/tenants are advised to recheck the measurements.

Energy Efficiency Rating		
	Current	Potential
Very energy efficient - lower running costs		
(92 plus) A		
(81-91) B	87	87
(69-80) C		
(55-68) D		
(39-54) E		
(21-38) F		
(1-20) G		
Not energy efficient - higher running costs		
England & Wales	EU Directive 2002/91/EC	

<https://www.letukhome.co.uk/>